
FENWICK SOLAR FARM

Fenwick Solar Farm
EN010152

Location Plan

Document Reference: EN010152/APP/2.1

Regulations 5(2)(o)

Infrastructure Planning (Applications: Prescribed Forms and Procedure)
Regulations 2009

December 2024
Revision Number: 01

Revision History

Revision Number	Date	Details
00	October 2024	DCO application
01	December 2024	S51 Response

Prepared for:
Fenwick Solar Project Limited

Prepared by:
AECOM Limited

© 2024 AECOM Limited. All Rights Reserved.

This document has been prepared by AECOM Limited (“AECOM”) for sole use of our client (the “Client”) in accordance with generally accepted consultancy principles, the budget for fees and the terms of reference agreed between AECOM and the Client. Any information provided by third parties and referred to herein has not been checked or verified by AECOM, unless otherwise expressly stated in the document. No third party may rely upon this document without the prior and express written agreement of AECOM.

PROJECT

Fenwick Solar Farm


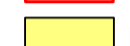

CLIENT

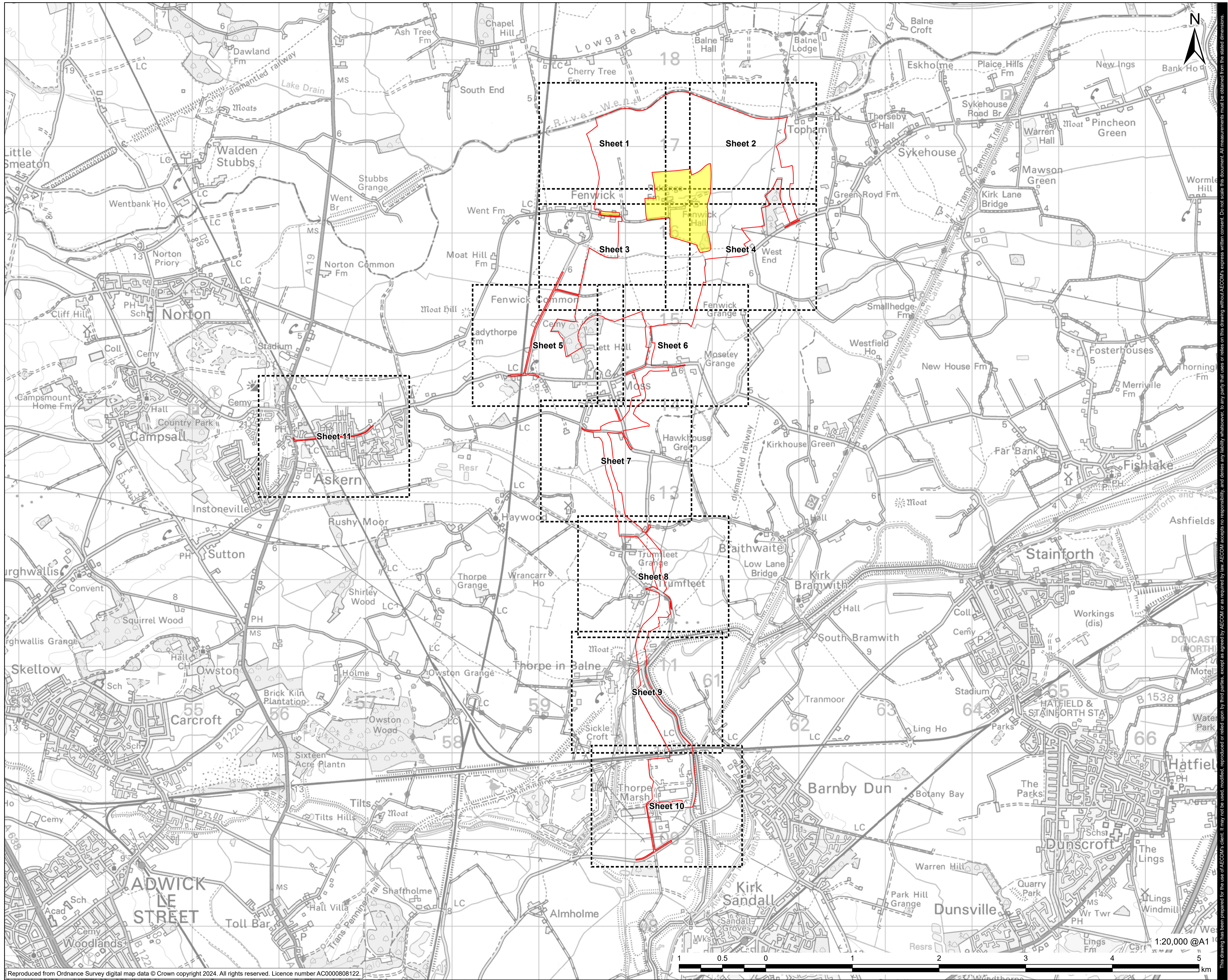
Fenwick Solar Project Limited

CONSULTANT

AECOM Limited
Midpoint
Alencon Link
Basingstoke, RG21 7PP
www.aecom.com

LEGEND

-  Order limits
-  Land not included in the Order limits
-  Sheet Extent with Reference to Sheet Number



SECTION 51 RESPONSE	LP	AK	09/12/2024	01
FOR DCO APPLICATION	AK	JW	24/09/2024	0
REVISION DETAILS	BY	CHECK	DATE	REV

ISSUE PURPOSE

DCO Application

PROJECT NUMBER

60698207

PLAN TITLE

Location Plan Sheet Extents

REFERENCE NUMBER

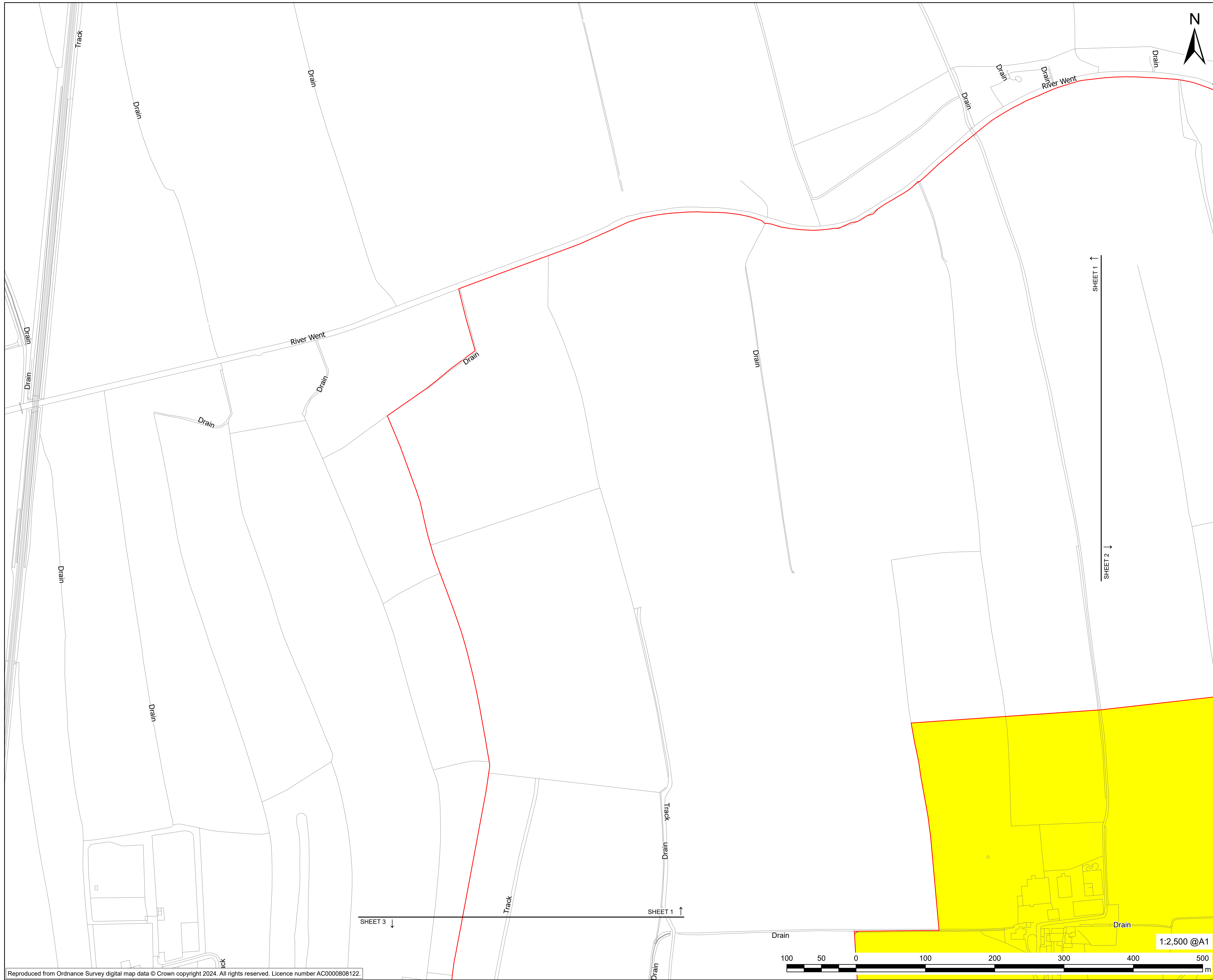
EN010152/APP/2.5

LEGISLATION REFERENCE

APFP 2009 Regulation 5(2)(o)

This drawing has been prepared for the use of AECOM's client. It may not be used, modified, reproduced or relied upon by third parties, except as agreed by AECOM, or as required by law. AECOM accepts no responsibility, and denies any liability whatsoever, to any party that uses or relies on this drawing without AECOM's express written consent. Do not scale this document. All measurements must be obtained from the stated dimensions.

ISO A1 594mm x 841mm
Revision: 0 Drawn: LP Checked: AK Approved: MS Date: 2024-12-09
Filename: I:\5004 - Information Systems\60698207_Fenwick_Solar_Maps\DCO\Doc_2_5_Location_Plan\EN010152_APP2_5_Location_Plan_V1_A1.aprx



Reproduced from Ordnance Survey digital map data © Crown copyright 2024. All rights reserved. Licence number AC0000808122.

PROJECT

Fenwick Solar Farm

CLIENT

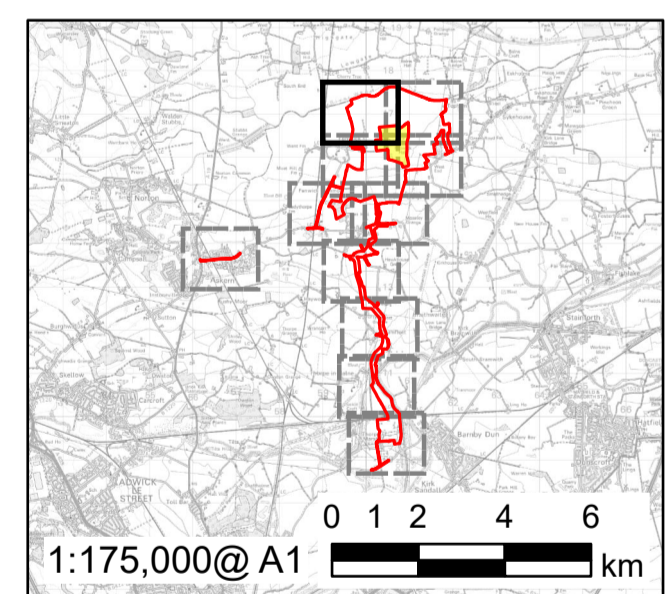
Fenwick Solar Project Limited

CONSULTANT

AECOM Limited
Midpoint
Alencon Link
Basingstoke, RG21 7PP
www.aecom.com

LEGEND

- Order limits
- Land not included in the Order limits



SECTION 51 RESPONSE	LP	09/12/2024	01
	AK		
FOR DCO APPLICATION	AK	24/09/2024	0
	JW		
REVISION DETAILS	BY	DATE	REV
	CHECK		

ISSUE PURPOSE

DCO Application

PROJECT NUMBER

60698207

PLAN TITLE

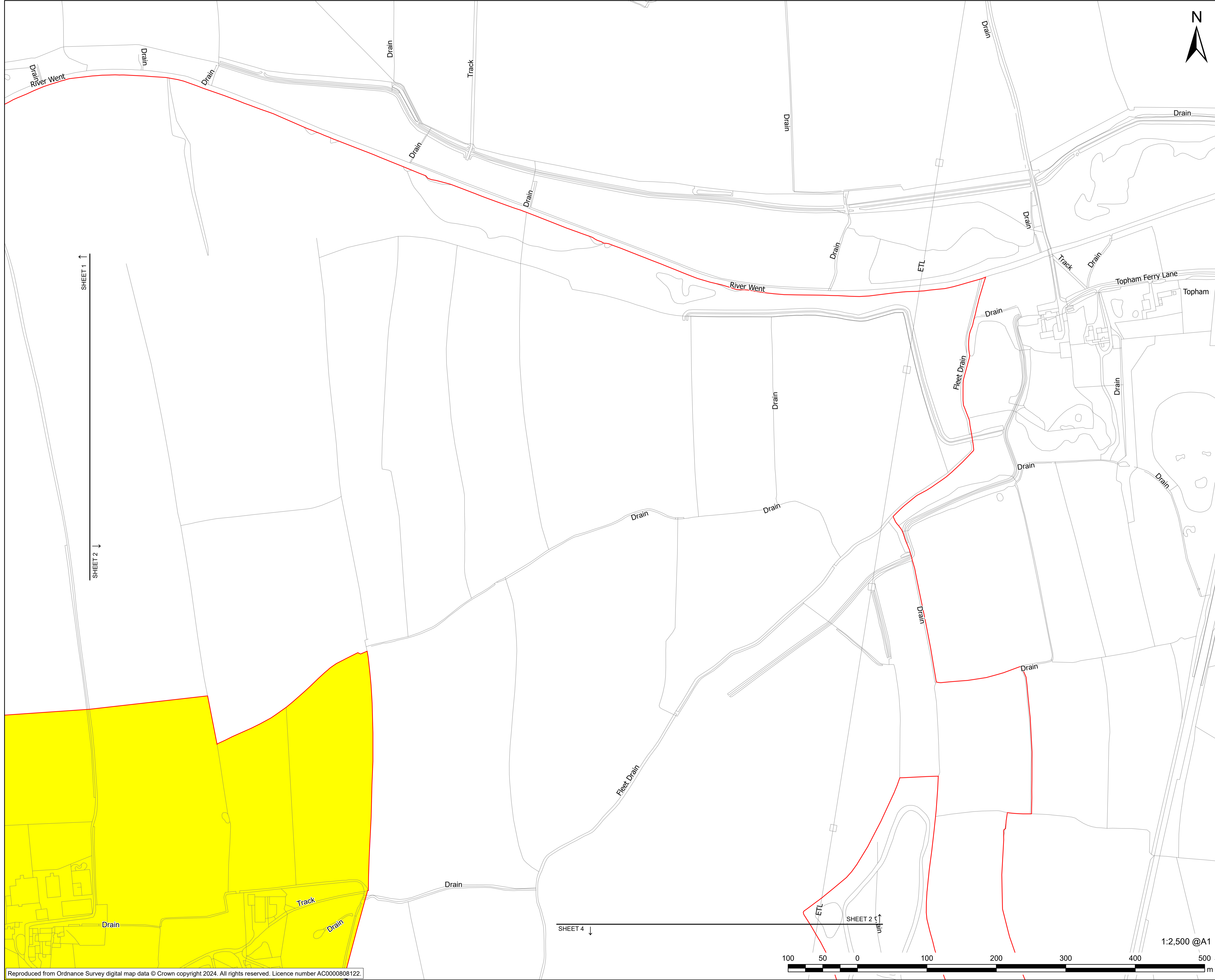
Location Plan - Sheet 1 of 11

REFERENCE NUMBER

EN10152/APP/2.5

LEGISLATION REFERENCE

APFP 2009 Regulation 5(2)(o)



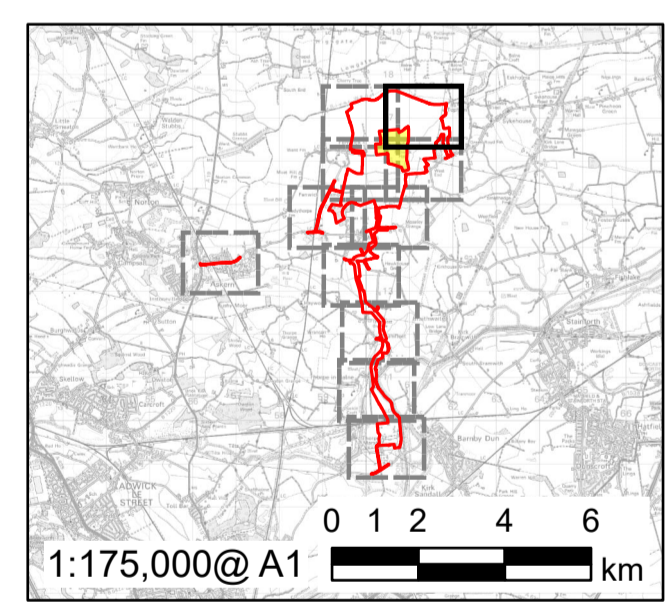
PROJECT
Fenwick Solar Farm

CLIENT
Fenwick Solar Project Limited

CONSULTANT
AECOM Limited
Midpoint
Alencon Link
Basingstoke, RG21 7PP
www.aecom.com

LEGEND

- Order limits
- Land not included in the Order limits



SECTION 51 RESPONSE	LP	09/12/2024	01
	AK		
FOR DCO APPLICATION	AK	24/09/2024	0
	JW		
REVISION DETAILS	BY	DATE	REV
	CHECK		

ISSUE PURPOSE
DCO Application

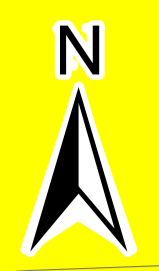
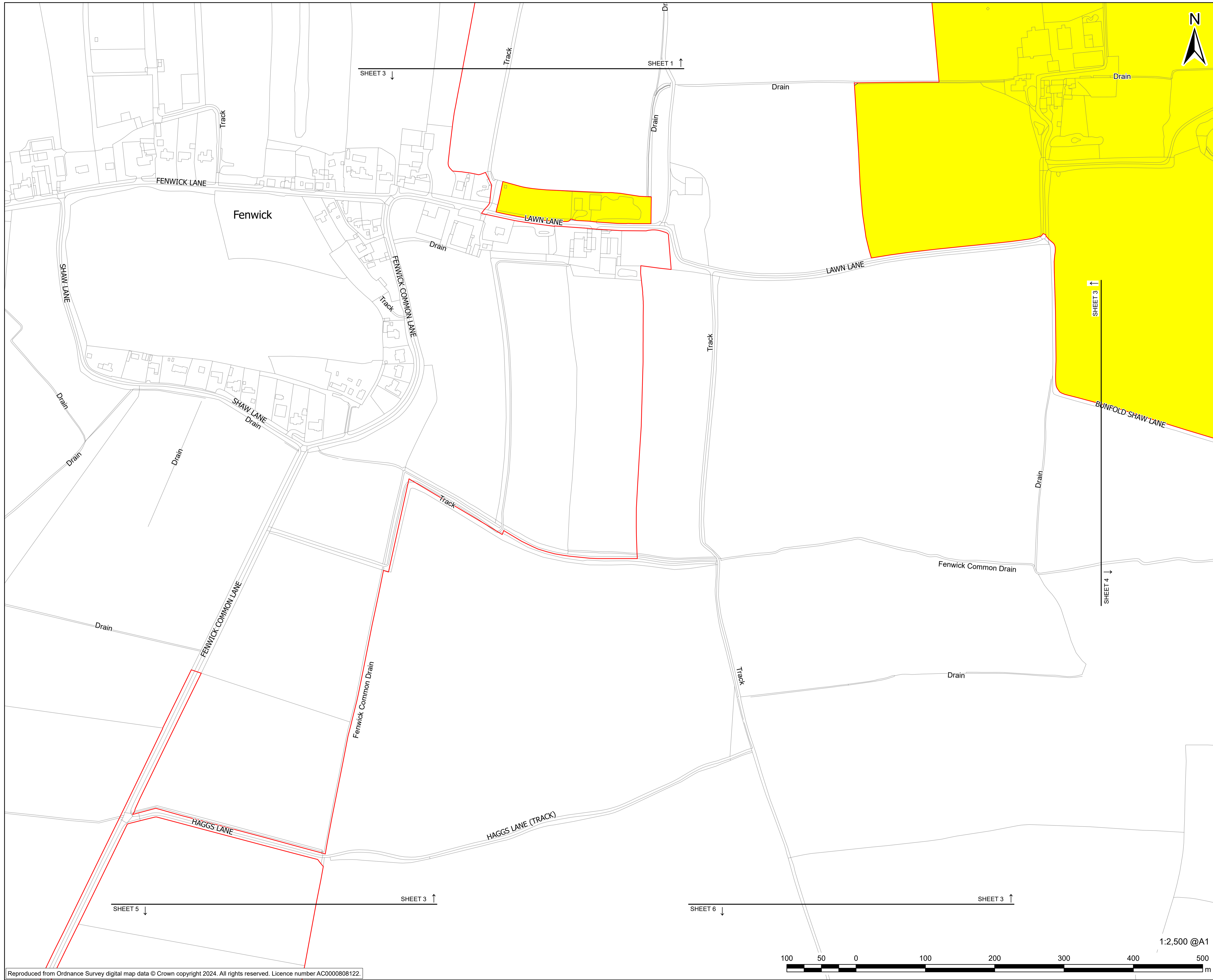
PROJECT NUMBER
60698207

PLAN TITLE
Location Plan - Sheet 2 of 11

REFERENCE NUMBER
EN10152/APP/2.5

LEGISLATION REFERENCE
APFP 2009 Regulation 5(2)(o)

This drawing has been prepared for the use of AECOM's client. It may not be used, modified, reproduced or relied upon by third parties, except as agreed by AECOM or as required by AECOM, and AECOM accepts no responsibility, and denies any liability whatsoever, to any party that uses or relies on this drawing without AECOM's express written consent. Do not scale this document. All measurements must be obtained from the stated dimensions.



PROJECT

Fenwick Solar Farm

CLIENT

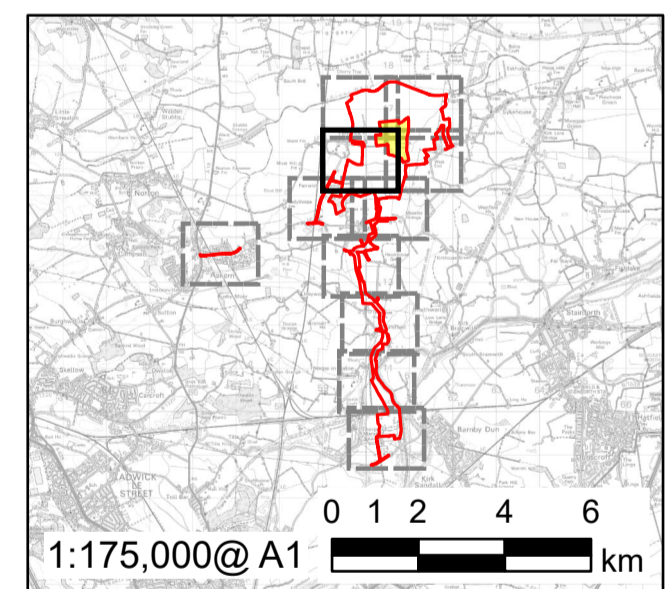
Fenwick Solar Project Limited

CONSULTANT

AECOM Limited
 Midpoint
 Alencon Link
 Basingstoke, RG21 7PP
 www.aecom.com

LEGEND

- Order limits
- Land not included in the Order limits



SECTION 51 RESPONSE	LP	09/12/2024	01
	AK		
FOR DCO APPLICATION	AK	24/09/2024	0
REVISION DETAILS	BY	DATE	REV
	CHECK		

ISSUE PURPOSE

DCO Application

PROJECT NUMBER

60698207

PLAN TITLE

Location Plan - Sheet 3 of 11

REFERENCE NUMBER

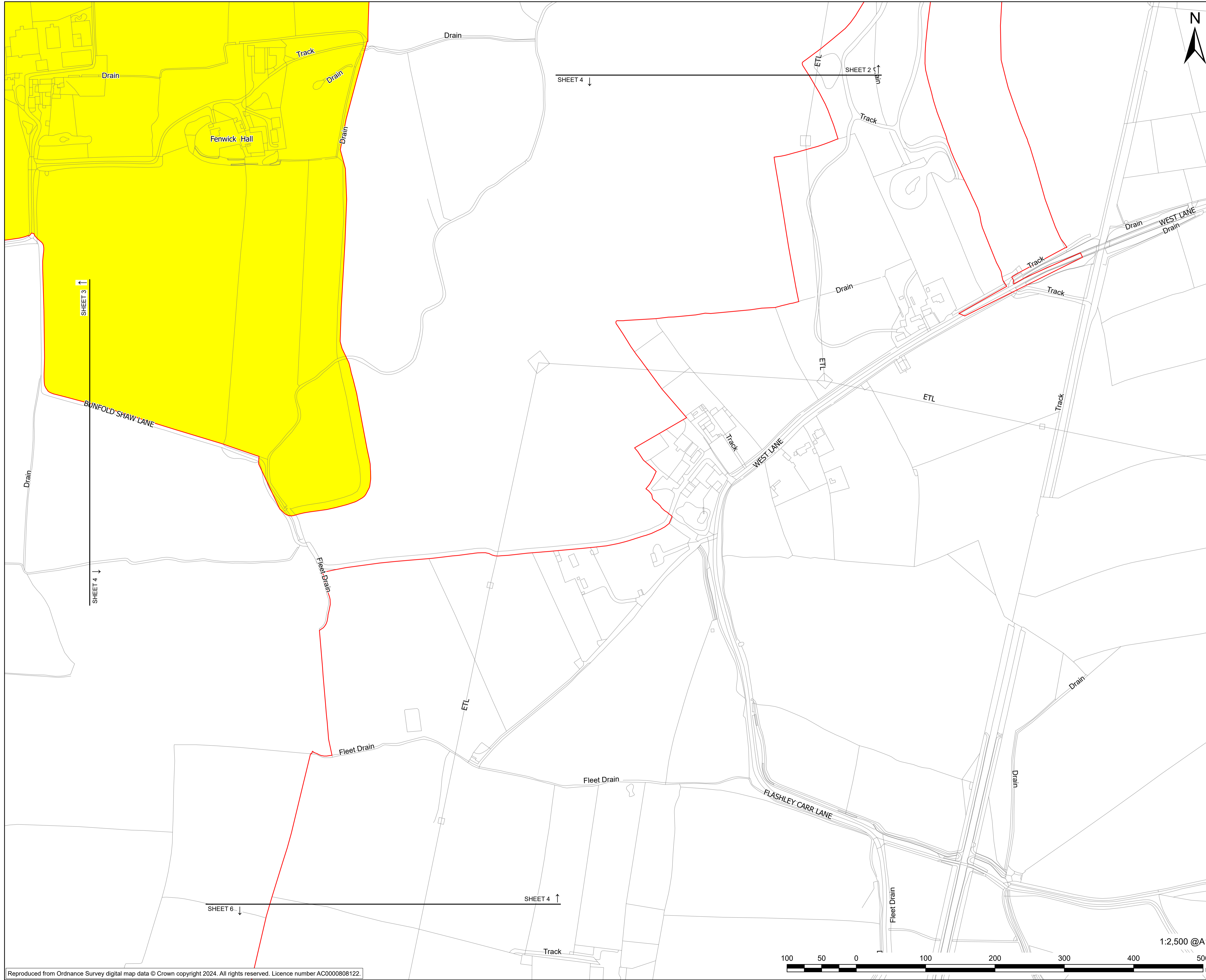
EN010152/APP/2.5

LEGISLATION REFERENCE

APFP 2009 Regulation 5(2)(o)



This drawing has been prepared for the use of AECOM's client. It may not be used, modified, reproduced or relied upon by third parties, except as agreed by AECOM or as required by law. AECOM accepts no responsibility, and denies any liability whatsoever, to any party that uses or relies on this drawing without AECOM's express written consent. Do not scale this document. All measurements must be obtained from the stated dimensions.



PROJECT

Fenwick Solar Farm

CLIENT

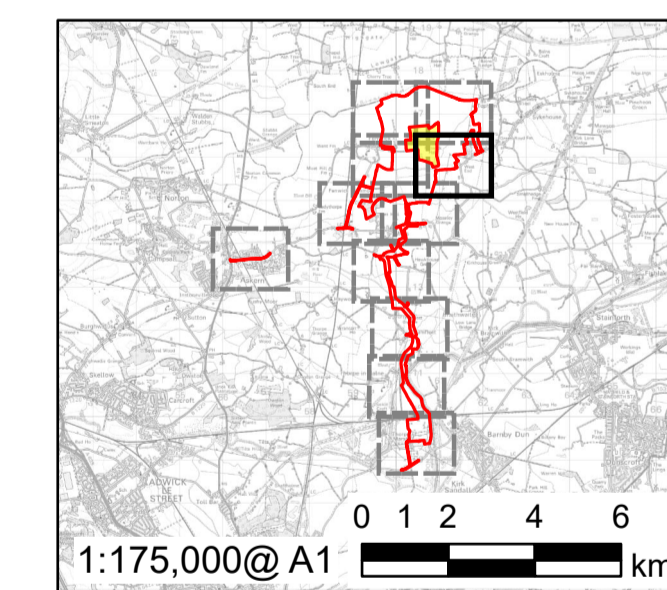
Fenwick Solar Project Limited

CONSULTANT

AECOM Limited
Midpoint
Alencon Link
Basingstoke, RG21 7PP
www.aecom.com

LEGEND

- Order limits
- Land not included in the Order limits



SECTION 51 RESPONSE	LP	09/12/2024	01
	AK		
FOR DCO APPLICATION	AK	24/09/2024	0
	JW		
REVISION DETAILS	BY	DATE	REV
	CHECK		

ISSUE PURPOSE

DCO Application

PROJECT NUMBER

60698207

PLAN TITLE

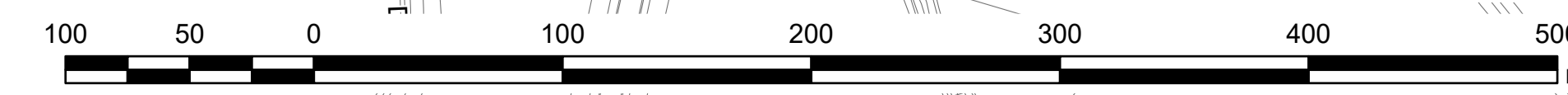
Location Plan - Sheet 4 of 11

REFERENCE NUMBER

EN10152/APP/2.5

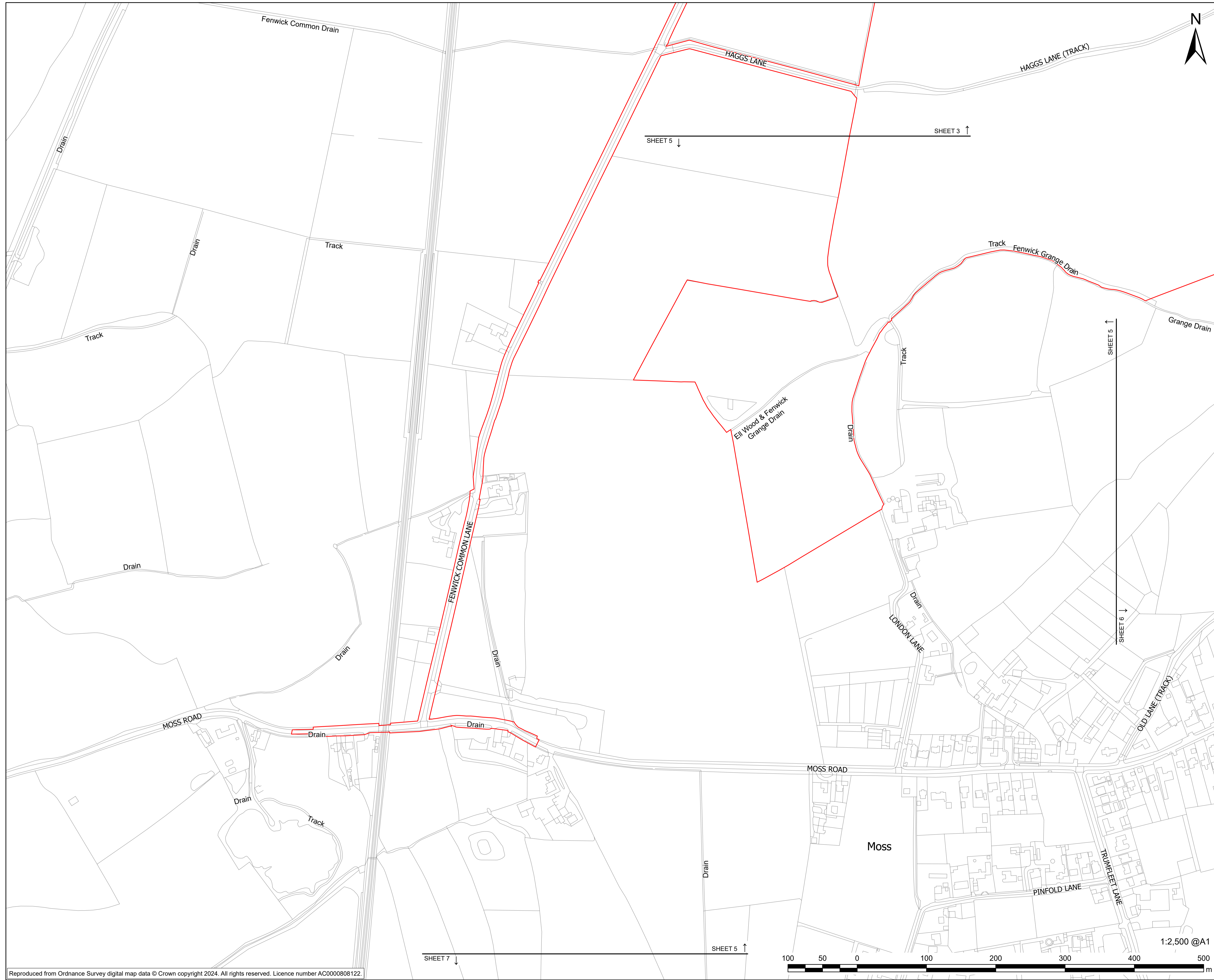
LEGISLATION REFERENCE

APFP 2009 Regulation 5(2)(o)



1:2,500 @A1

This drawing has been prepared for the use of AECOM's client. It may not be used, modified, reproduced or relied upon by third parties, except as agreed by AECOM or as required by AECOM, and denies any liability whatsoever to any party that uses or relies on this drawing without AECOM's express written consent. Do not scale this document. All measurements must be obtained from the stated dimensions.



This drawing has been prepared for the use of AECOM's client. It may not be used, modified, reproduced or relied upon by third parties, except as agreed by AECOM or as required by AECOM, and AECOM accepts no responsibility, and denies any liability whatsoever, to any party that uses or relies on this drawing without AECOM's express written consent. Do not scale this document. All measurements must be obtained from the stated dimensions.



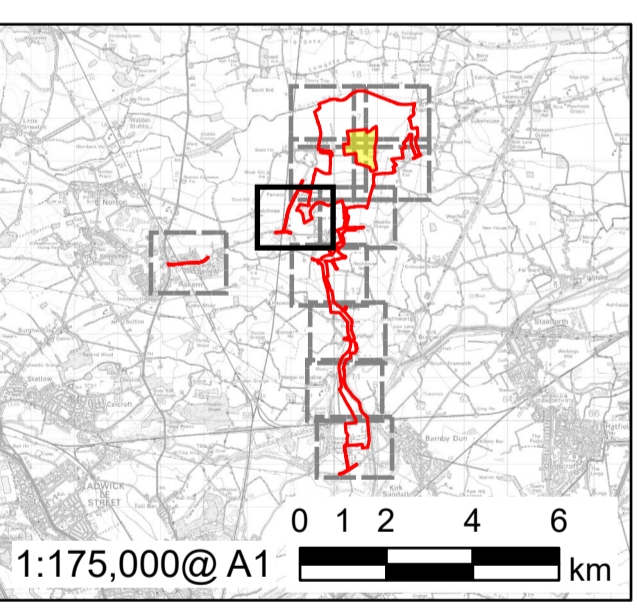
PROJECT
Fenwick Solar Farm

CLIENT
Fenwick Solar Project Limited

CONSULTANT
AECOM Limited
Midpoint
Alencon Link
Basingstoke, RG21 7PP
www.aecom.com

LEGEND

- Order limits
- Land not included in the Order limits



SECTION 51 RESPONSE	LP	09/12/2024	01
	AK		
FOR DCO APPLICATION	AK	24/09/2024	0
	JW		
REVISION DETAILS	BY	DATE	REV
	CHECK		

ISSUE PURPOSE
DCO Application

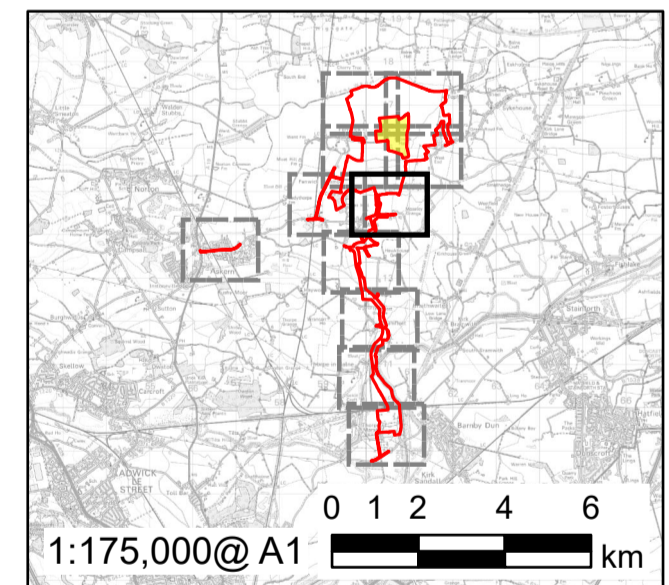
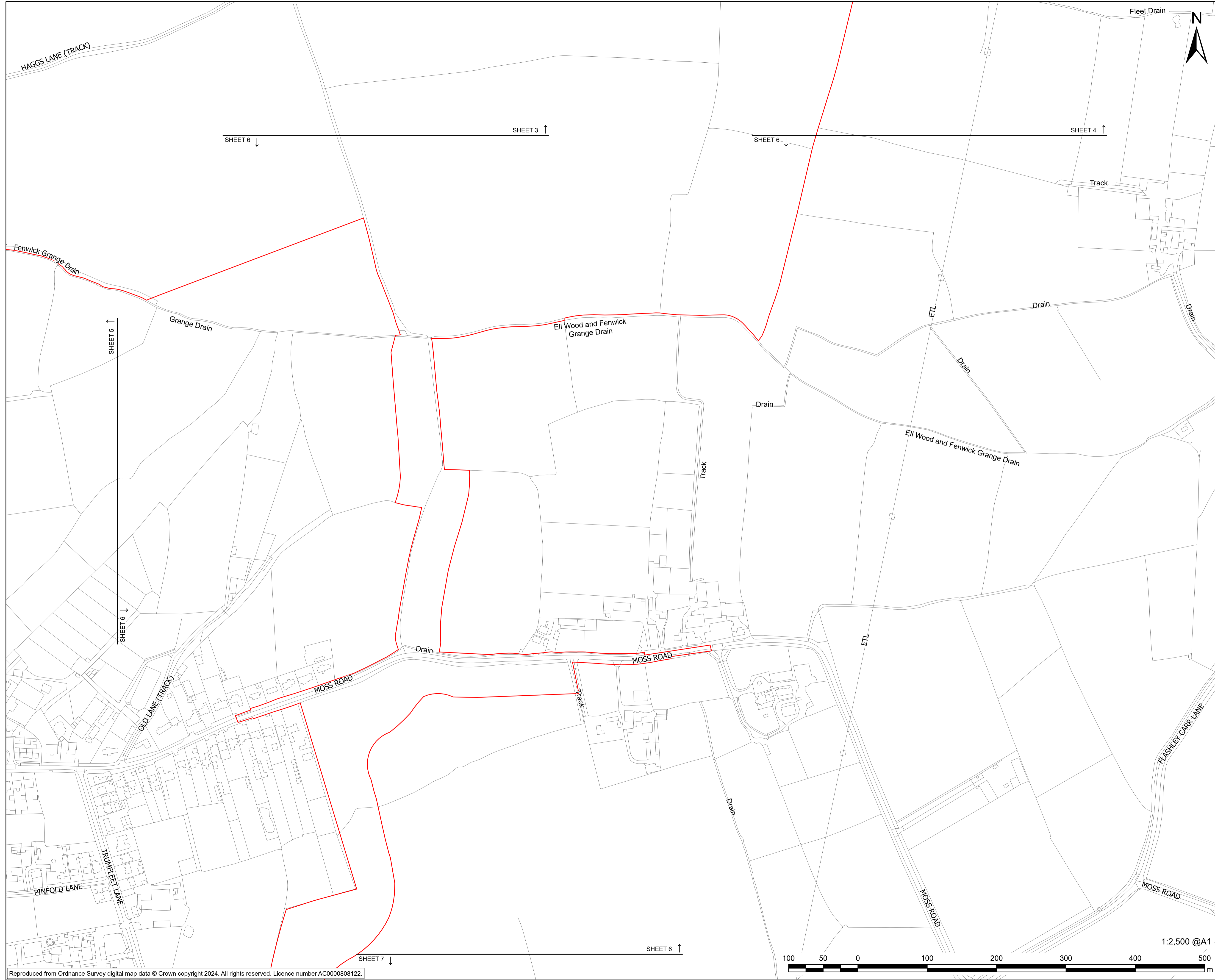
PROJECT NUMBER
60698207

PLAN TITLE
Location Plan - Sheet 5 of 11

REFERENCE NUMBER
EN10152/APP/2.5

LEGISLATION REFERENCE
APFP 2009 Regulation 5(2)(o)





SECTION 51 RESPONSE	LP	09/12/2024	01
	AK		
FOR DCO APPLICATION	AK	24/09/2024	0
	JW		
REVISION DETAILS	BY	DATE	REV
	CHECK		

ISSUE PURPOSE

DCO Application

PROJECT NUMBER

60698207

PLAN TITLE

Location Plan - Sheet 6 of 11

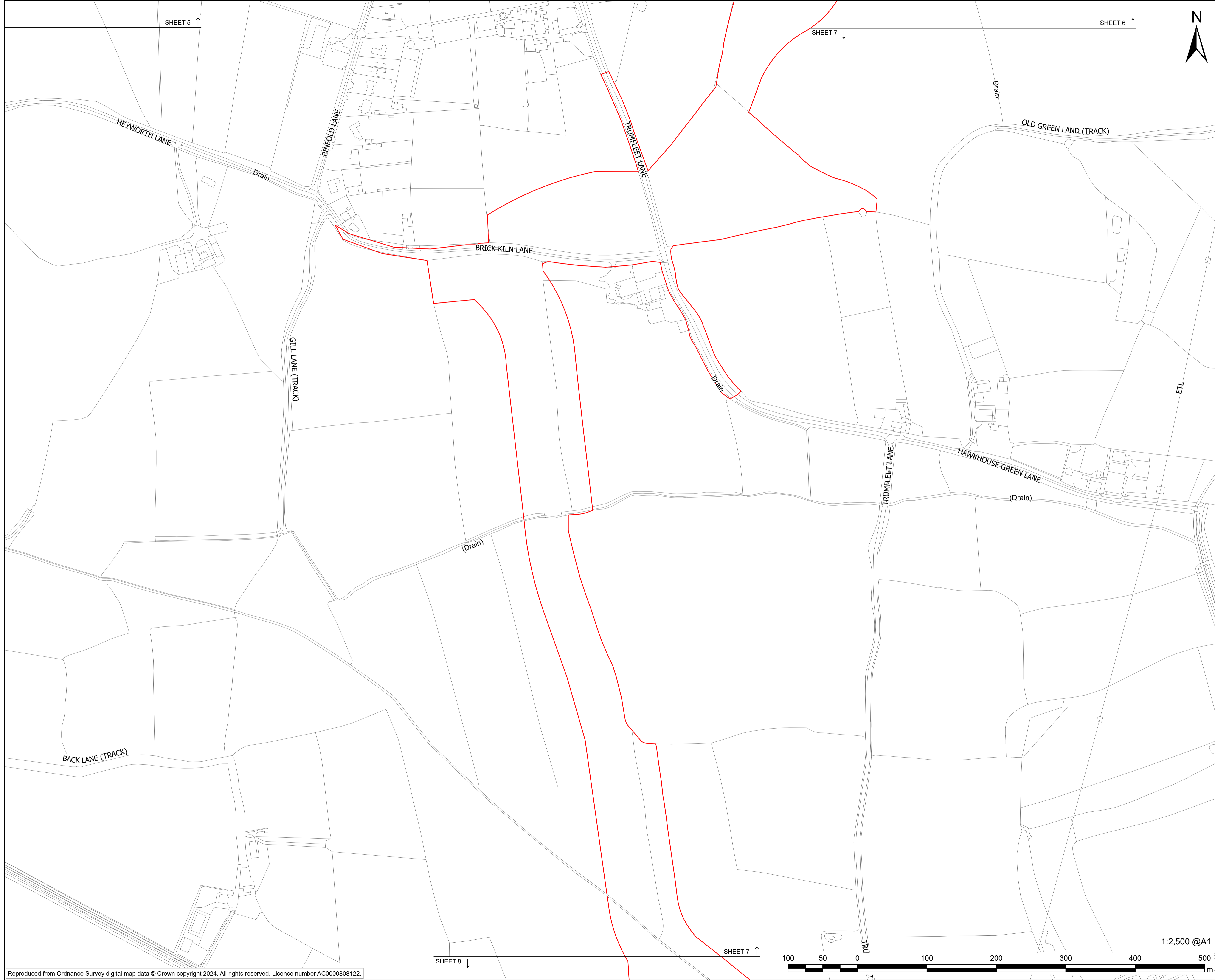
REFERENCE NUMBER

EN10152/APP/2.5

LEGISLATION REFERENCE

APFP 2009 Regulation 5(2)(o)

This drawing has been prepared for the use of AECOM's client. It may not be used, modified, reproduced or relied upon by third parties, except as agreed by AECOM or as required by law. AECOM accepts no responsibility, and denies any liability whatsoever, to any party that uses or relies on this drawing without AECOM's express written consent. Do not scale this document. All measurements must be obtained from the stated dimensions.



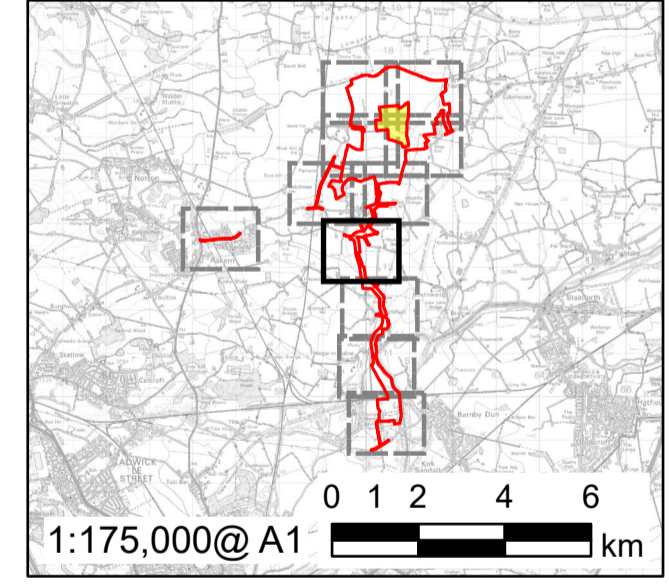
PROJECT
Fenwick Solar Farm

CLIENT
Fenwick Solar Project Limited

CONSULTANT
AECOM Limited
Midpoint
Alencon Link
Basingstoke, RG21 7PP
www.aecom.com

LEGEND

- Order limits
- Land not included in the Order limits



SECTION 51 RESPONSE	LP	09/12/2024	01
	AK		
FOR DCO APPLICATION	AK	24/09/2024	0
	JW		
REVISION DETAILS	BY	DATE	REV
	CHECK		

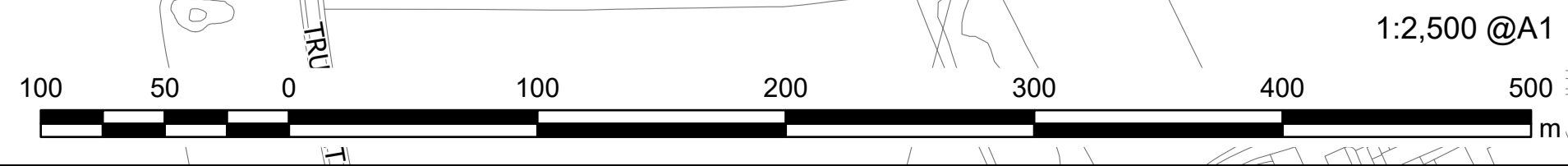
ISSUE PURPOSE
DCO Application

PROJECT NUMBER
60698207

PLAN TITLE
Location Plan - Sheet 7 of 11

REFERENCE NUMBER
EN10152/APP/2.5

LEGISLATION REFERENCE
APFP 2009 Regulation 5(2)(o)





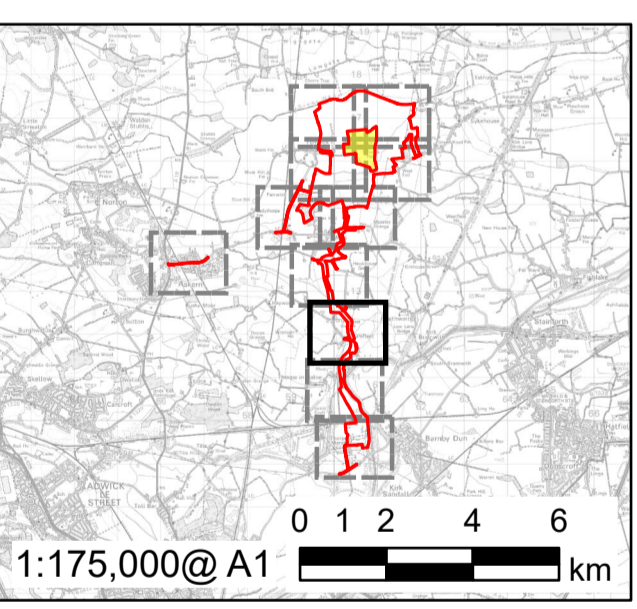
PROJECT
Fenwick Solar Farm

CLIENT
Fenwick Solar Project Limited

CONSULTANT
AECOM Limited
Midpoint
Alencon Link
Basingstoke, RG21 7PP
www.aecom.com

LEGEND

- Order limits
- Land not included in the Order limits



SECTION 51 RESPONSE	LP	09/12/2024	01
	AK		
FOR DCO APPLICATION	AK	24/09/2024	0
	JW		
REVISION DETAILS	BY	DATE	REV
	CHECK		

ISSUE PURPOSE
DCO Application

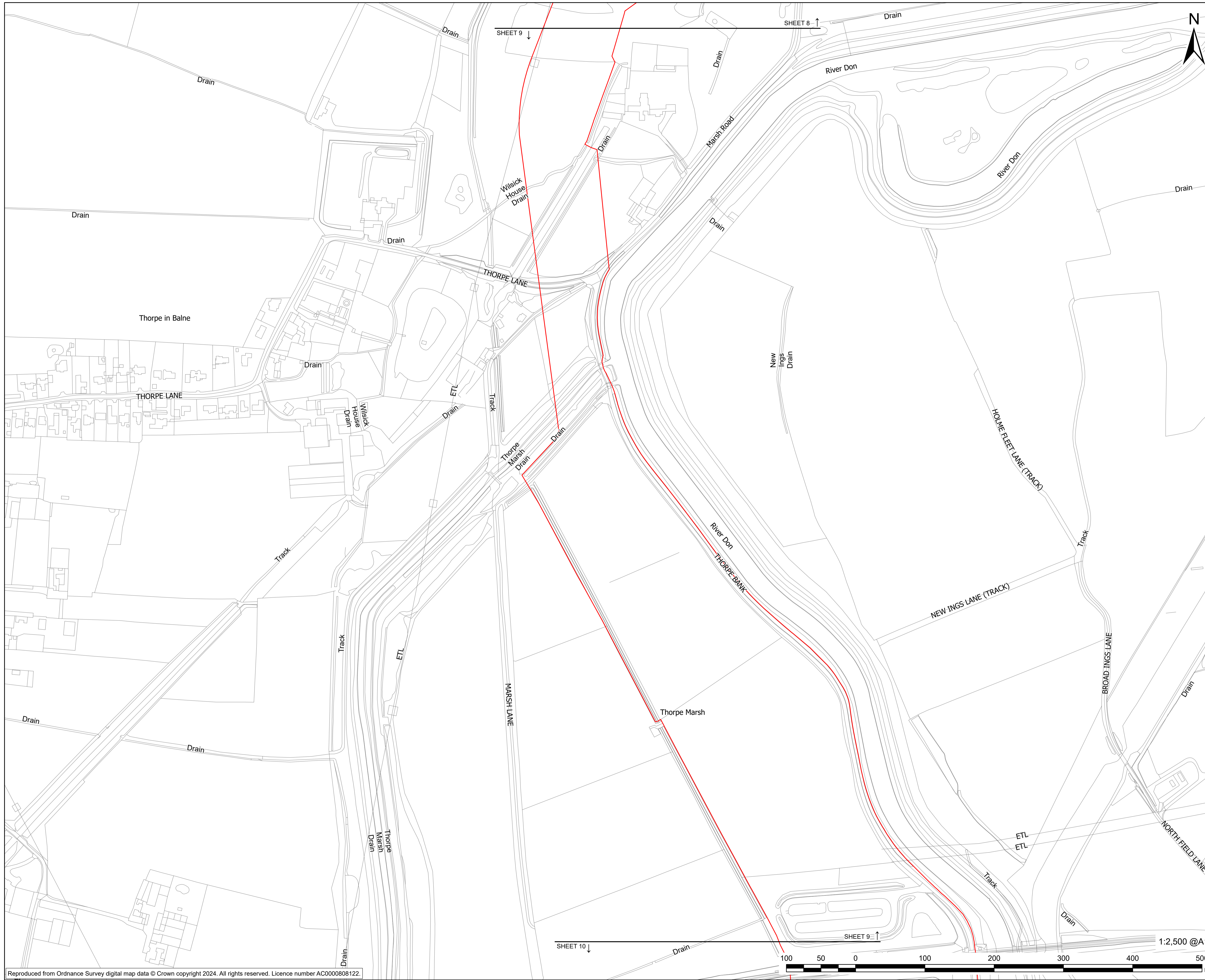
PROJECT NUMBER
60698207

PLAN TITLE
Location Plan - Sheet 8 of 11

REFERENCE NUMBER
EN10152/APP/2.5

LEGISLATION REFERENCE
APFP 2009 Regulation 5(2)(o)

This drawing has been prepared for the use of AECOM's client. It may not be used, modified, reproduced or relied upon by third parties, except as agreed by AECOM or as required by AECOM or as required by law. AECOM accepts no responsibility, and denies any liability whatsoever, to any party that uses or relies on this drawing without AECOM's express written consent. Do not scale this document. All measurements must be obtained from the stated dimensions.



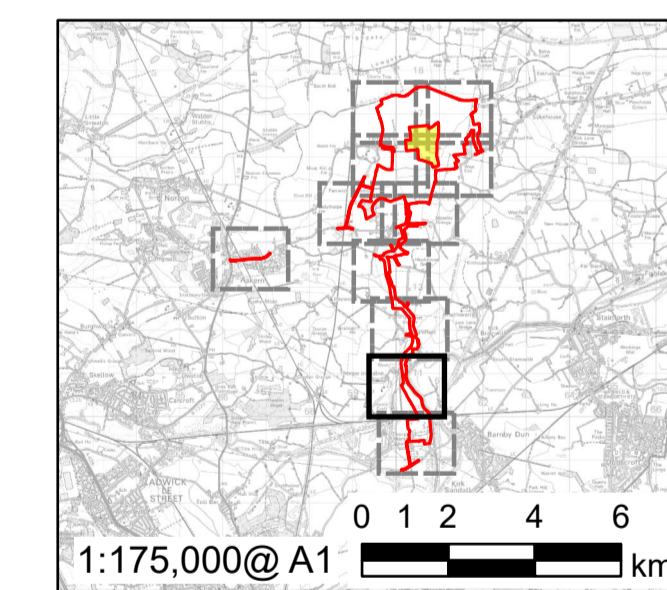
PROJECT
Fenwick Solar Farm

CLIENT
Fenwick Solar Project Limited

CONSULTANT
AECOM Limited
Midpoint
Alencon Link
Basingstoke, RG21 7PP
www.aecom.com

LEGEND

- Order limits
- Land not included in the Order limits



SECTION 51 RESPONSE	LP	09/12/2024	01
	AK		
FOR DCO APPLICATION	AK	24/09/2024	0
REVISION DETAILS	BY	DATE	REV
	CHECK		

ISSUE PURPOSE

DCO Application

PROJECT NUMBER

60698207

PLAN TITLE

Location Plan - Sheet 9 of 11

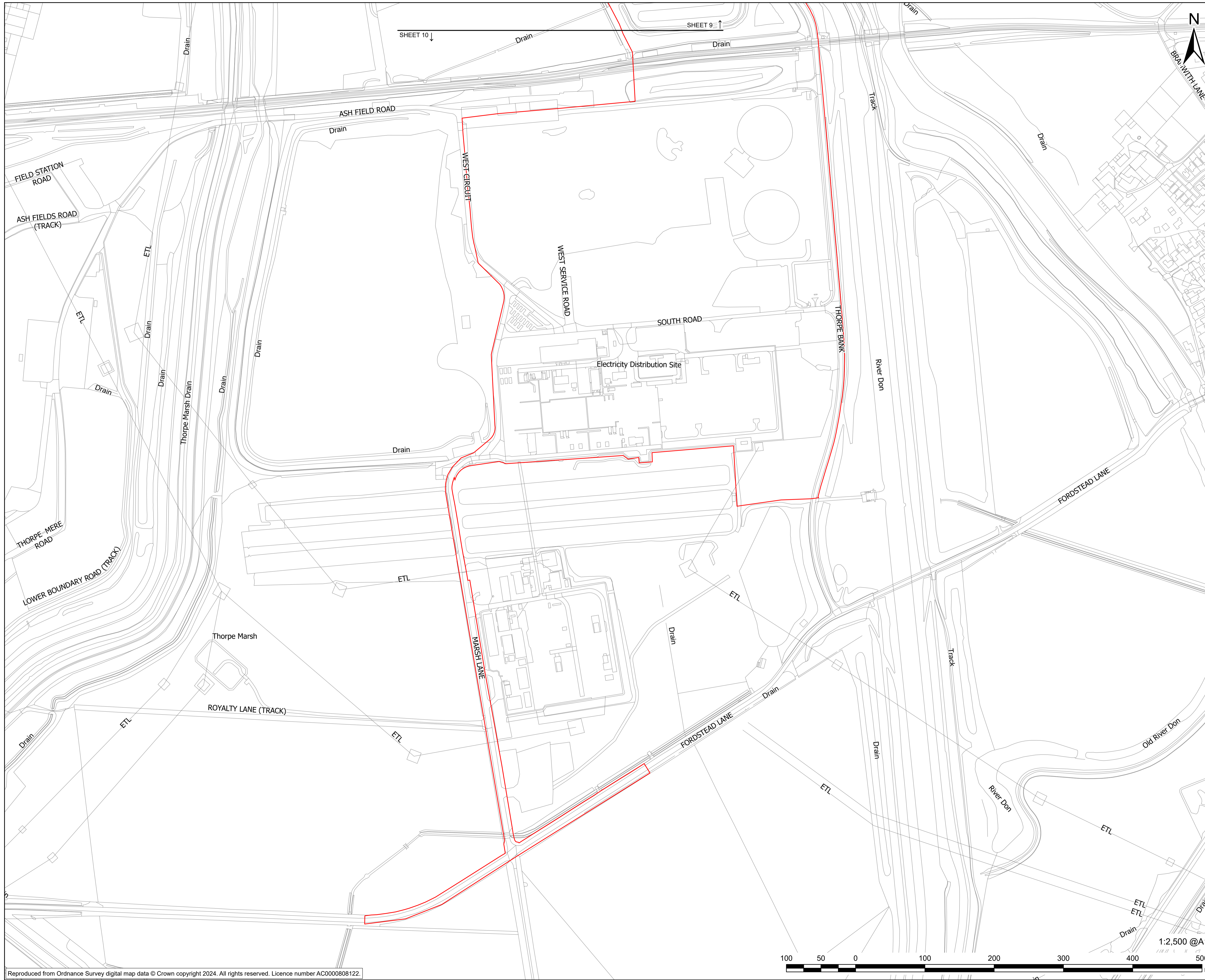
REFERENCE NUMBER

EN10152/APP/2.5

LEGISLATION REFERENCE

APFP 2009 Regulation 5(2)(o)

This drawing has been prepared for the use of AECOM's client. It may not be used, modified, reproduced or relied upon by third parties, except as agreed by AECOM or as required by AECOM. AECOM accepts no responsibility, and denies any liability whatsoever, to any party that uses or relies on this drawing without AECOM's express written consent. Do not scale this document. All measurements must be obtained from the stated dimensions.

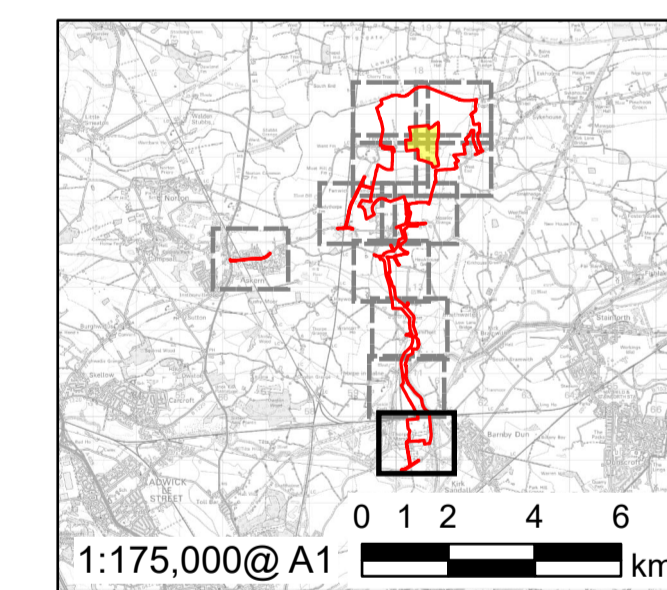


PROJECT
Fenwick Solar Farm

CLIENT
Fenwick Solar Project Limited

CONSULTANT
AECOM Limited
Midpoint
Alencon Link
Basingstoke, RG21 7PP
www.aecom.com

LEGEND
 Order limits
 Land not included in the Order limits



SECTION 51 RESPONSE	LP	09/12/2024	01
	AK		
FOR DCO APPLICATION	AK	24/09/2024	0
	JW		
REVISION DETAILS	BY	DATE	REV
	CHECK		

ISSUE PURPOSE

DCO Application

PROJECT NUMBER

60698207

PLAN TITLE

Location Plan - Sheet 10 of 11

REFERENCE NUMBER

EN10152/APP/2.5

LEGISLATION REFERENCE

APFP 2009 Regulation 5(2)(o)



This drawing has been prepared for the use of AECOM's client. It may not be used, modified, reproduced or relied upon by third parties, except as agreed by AECOM or as required by law. AECOM accepts no responsibility, and denies any liability whatsoever, to any party that uses or relies on this drawing without AECOM's express written consent. Do not scale this document. All measurements must be obtained from the stated dimensions.



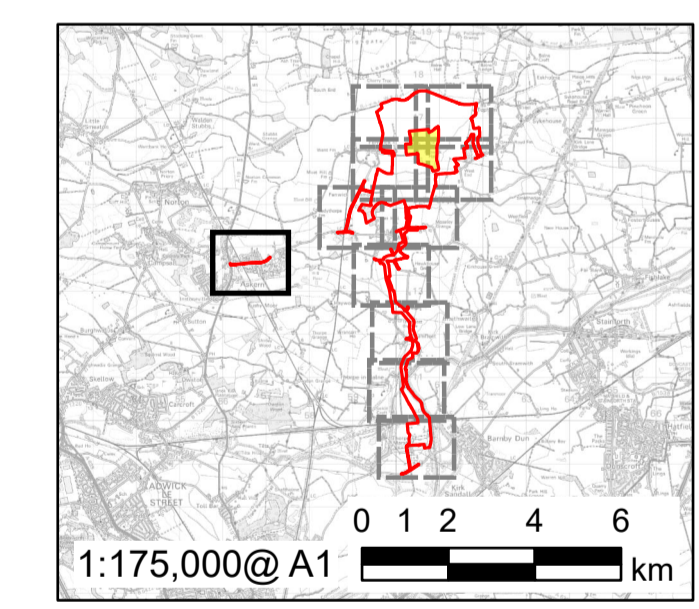
PROJECT
Fenwick Solar Farm

CLIENT
Fenwick Solar Project Limited

CONSULTANT
AECOM Limited
Midpoint
Alencon Link
Basingstoke, RG21 7PP
www.aecom.com

LEGEND

- Order limits
- Land not included in the Order limits



SECTION 51 RESPONSE	LP	09/12/2024	01
	AK		
FOR DCO APPLICATION	AK	24/09/2024	0
	JW		
REVISION DETAILS	BY	DATE	REV
	CHECK		

ISSUE PURPOSE

DCO Application

PROJECT NUMBER

60698207

PLAN TITLE

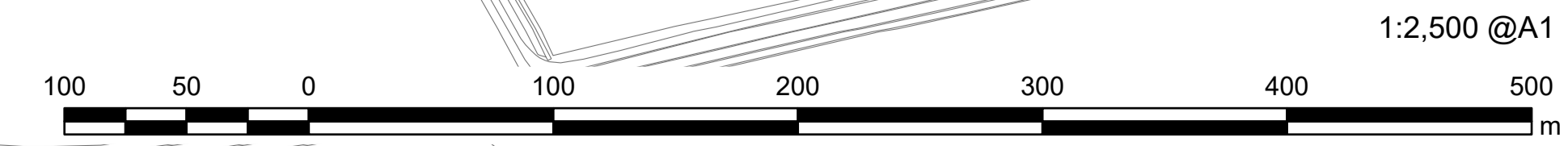
Location Plan - Sheet 11 of 11

REFERENCE NUMBER

EN010152/APP/2.5

LEGISLATION REFERENCE

APFP 2009 Regulation 5(2)(o)



This drawing has been prepared for the use of AECOM's client. It may not be used, modified, reproduced or relied upon by third parties, except as agreed by AECOM or as required by law. AECOM accepts no responsibility, and denies any liability whatsoever, to any party that uses or relies on this drawing without AECOM's express written consent. Do not scale this document. All measurements must be obtained from the stated dimensions.

An aerial photograph of a vast solar farm at sunset. The rows of solar panels stretch across the landscape, creating a strong sense of perspective. The sky is a deep orange and red, with the sun low on the horizon, casting long shadows and highlighting the texture of the panels.

BOOM
POWER

BUILD | OWN | OPERATE | MAINTAIN

BOOM-POWER.CO.UK